



PINGREE NORTHWEST



FOR LEASE / 1,602 + 3,274 SF / \$18 SF +NNN
basement negotiable

RETAIL/OFFICE SPACE/BASEMENT
PRIVATE STUDIOS
FLEXIBLE TERMS AVAILABLE
330 SE MARTIN LUTHER KING JR. BLVD.
PORTLAND, OREGON

CULLY BUILDING

CULLY BUILDING

RETAIL / OFFICE / BASEMENT
PRIVATE STUDIOS

330 SE MARTIN LUTHER KING JR. BLVD.
PORTLAND, OR

1,602 + 3,274 SF

\$18 SF +NNN basement negotiable

The Cully Building was built in 1884 by stone mason Thomas Cully and renovated in a Commercial Revival tradition. Interior spaces are characterized by exposed brick and post & beam construction. The building is populated with an energetic mix of professionals.

Located in the established and vibrant core of the Central Eastside, the property has excellent proximity to public transportation, services, restaurant & bars, and the Central Business District.



- AVAILABLE IMMEDIATELY
- FLEXIBLE MONTH TO MONTH TERMS AVAILABLE
- BUILT AS OFFICES WITH VIDEO EDITING SUITES
- EXCELLENT ACOUSTIC SEPARATION
- KITCHENETTE
- PRIVATE RESTROOMS
- RESERVED OFF STREET PARKING
- EXCELLENT PUBLIC AND BIKE TRANSPORTATION
- EXPOSED BRICK & EXCEPTIONAL CRAFTSMANSHIP
- FREIGHT ELEVATOR TO BASEMENT

TIM MCCARRON,
Property Manager

(503) 939-9449

tmccarron

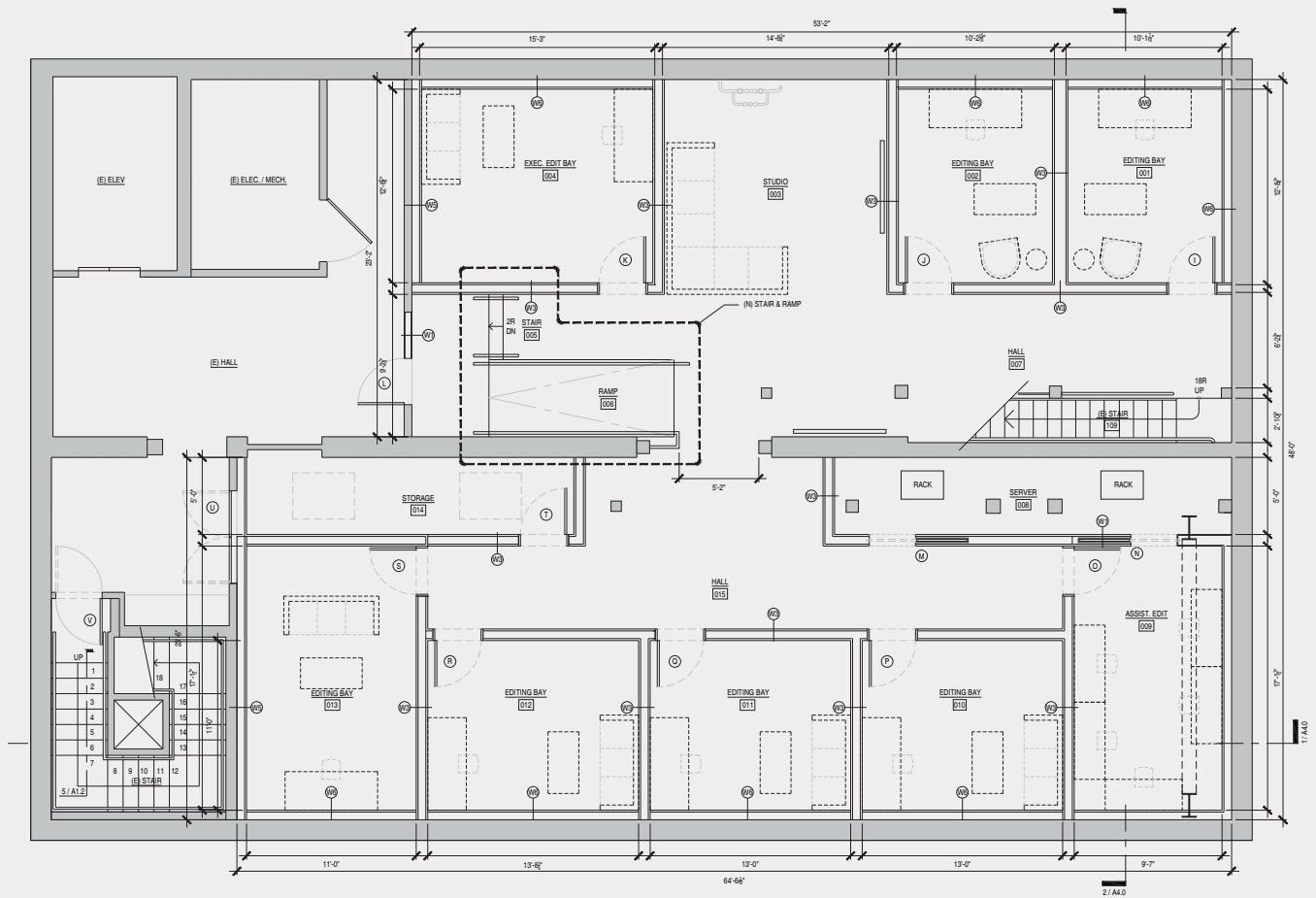
@pingreenorthwest.com

PINGREENORTHWEST.COM



CULLY BUILDING

RETAIL / OFFICE / BASEMENT PRIVATE STUDIOS



BASEMENT PRIVATE STUDIOS | 3,274 SF

TIM MCCARRON,
Property Manager

(503) 939-9449

tmccarron

@pingreenorthwest.com

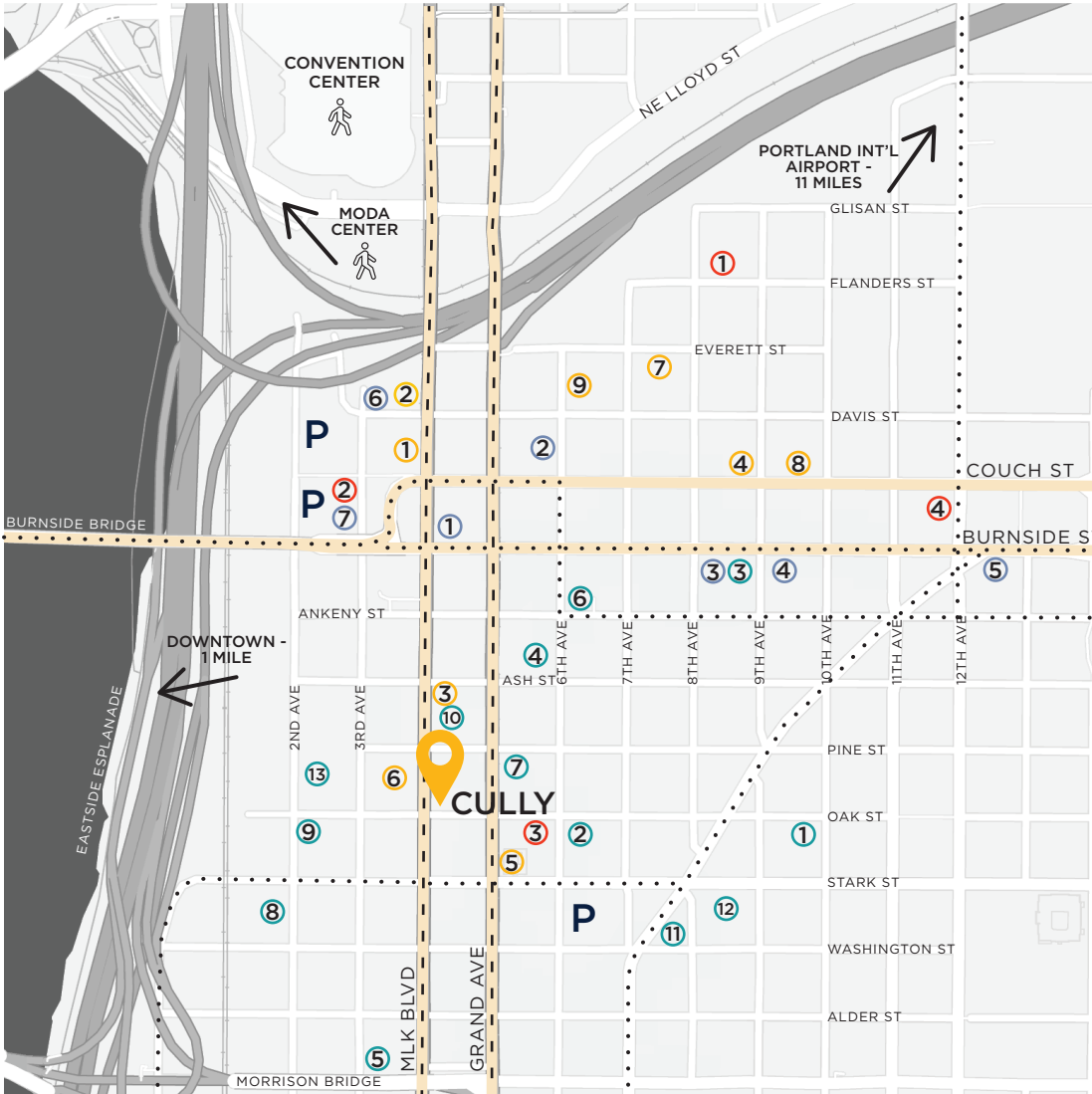
PINGREENORTHWEST.COM

NEIGHBORHOOD

TIM MCCARRON Property Manager

(503) 939-9449 / tmccarron@pingreenorthwest.com

PINGREENORTHWEST.COM



KEY

WALKING DISTANCE



PARKING



BUS ROUTE

STREET CAR

BIKE LANE



1. Base Camp Brewing
2. Cooper's Hall
3. Doug Fir Lounge
4. J&M Cafe
5. Le Bistro Montage
6. Marukin Ramen
7. Nicholas Lebanese
8. Olympia Provisions
9. Produce Row
10. Revelry
11. Rum Club
12. The Upper Crust
13. Wayfinder Brewing



1. 11:11
2. Cosube
3. Evo
4. Modo
5. Next Adventure
6. Office Depot
7. O'Gallerie
8. Seven Sisters
9. Woodcrafters



1. The Aura
2. Central Eastside Lofts
3. Jupiter Hotel
4. Jupiter Next
5. Linden Apartments
6. Slate
7. The Yard



1. Crossfit Portland
2. Knot Springs
3. Modo Yoga
4. Portland Rock Gym