



# PINGREE NORTHWEST



FOR LEASE / 1,673 SF / \$18 SF +NNN

CREATIVE / OFFICE SPACE  
FLEXIBLE TERMS AVAILABLE

330 SE MARTIN LUTHER KING JR. BLVD.  
PORTLAND, OREGON

# CULLY BUILDING



# CULLY BUILDING

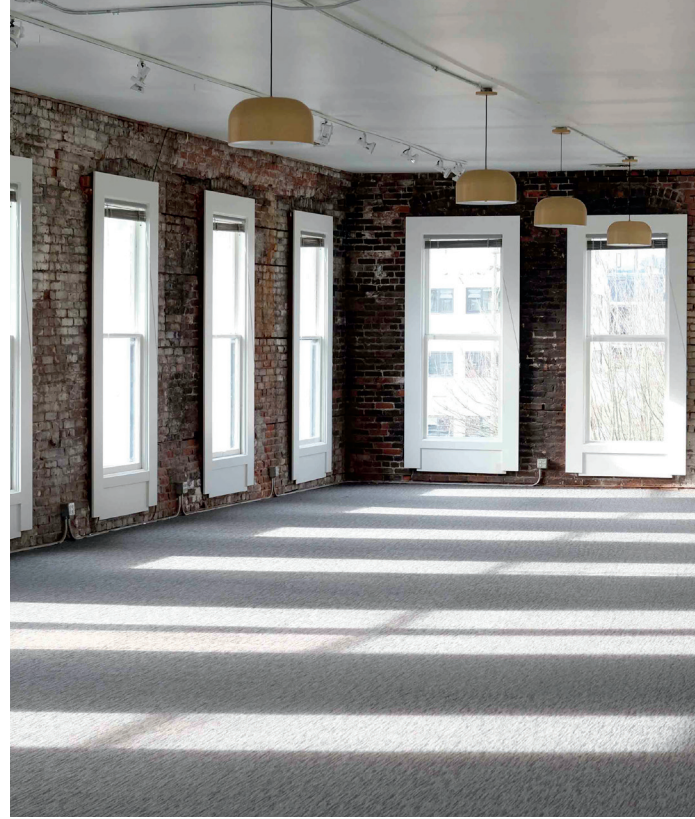
## CREATIVE / OFFICE SPACE

330 SE MARTIN LUTHER KING JR. BLVD.  
PORTLAND, OR

1,673 SF | \$18 SF +NNN

The Cully Building was built in 1884 by stone mason Thomas Cully and renovated in a Commercial Revival tradition. Interior spaces are characterized by exposed brick and post & beam construction. The building is populated with an energetic mix of professionals.

Located in the established and vibrant core of the Central Eastside, the property has excellent proximity to public transportation, services, restaurant & bars, and the Central Business District.



- AVAILABLE IMMEDIATELY
- FLEXIBLE MONTH TO MONTH TERMS AVAILABLE
- THIRD FLOOR WITH HIGH CEILINGS
- RESERVED, OFF-STREET PARKING AVAILABLE
- EXCELLENT PUBLIC AND BIKE TRANSPORTATION
- EXPOSED BRICK & EXCEPTIONAL CRAFTSMANSHIP
- TALL WINDOWS WITH EXCEPTIONAL NATURAL LIGHT
- KITCHENETTE
- ONSITE SHOWER FOR BIKE COMMUTERS
- FREIGHT ELEVATOR FOR SUITE TO STREET ACCESS

**TIM MCCARRON,**

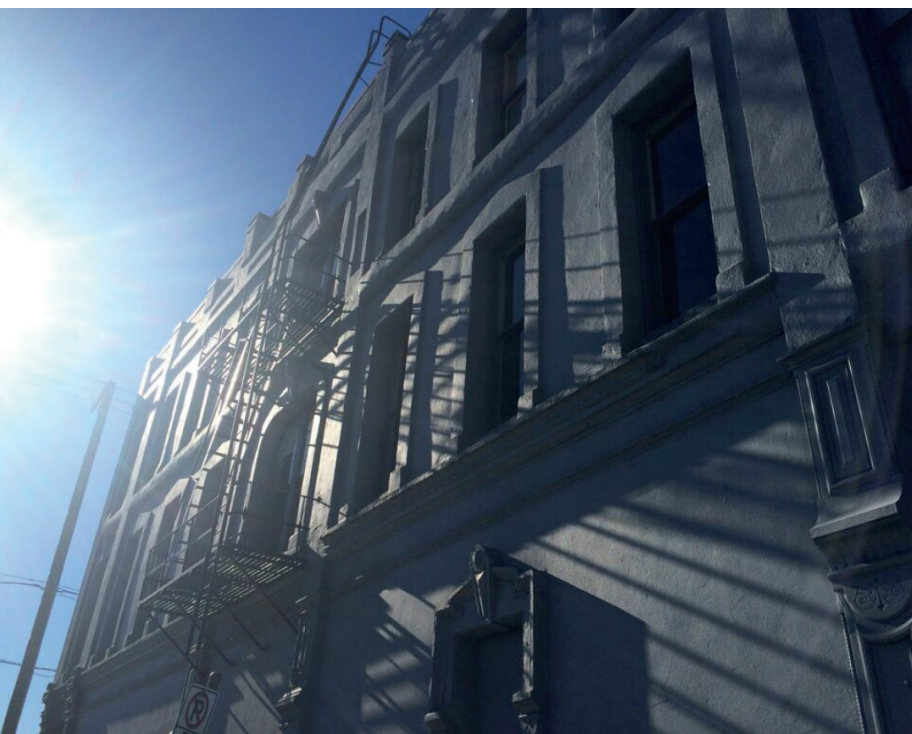
Property Manager

(503) 939-9449

tmccarron

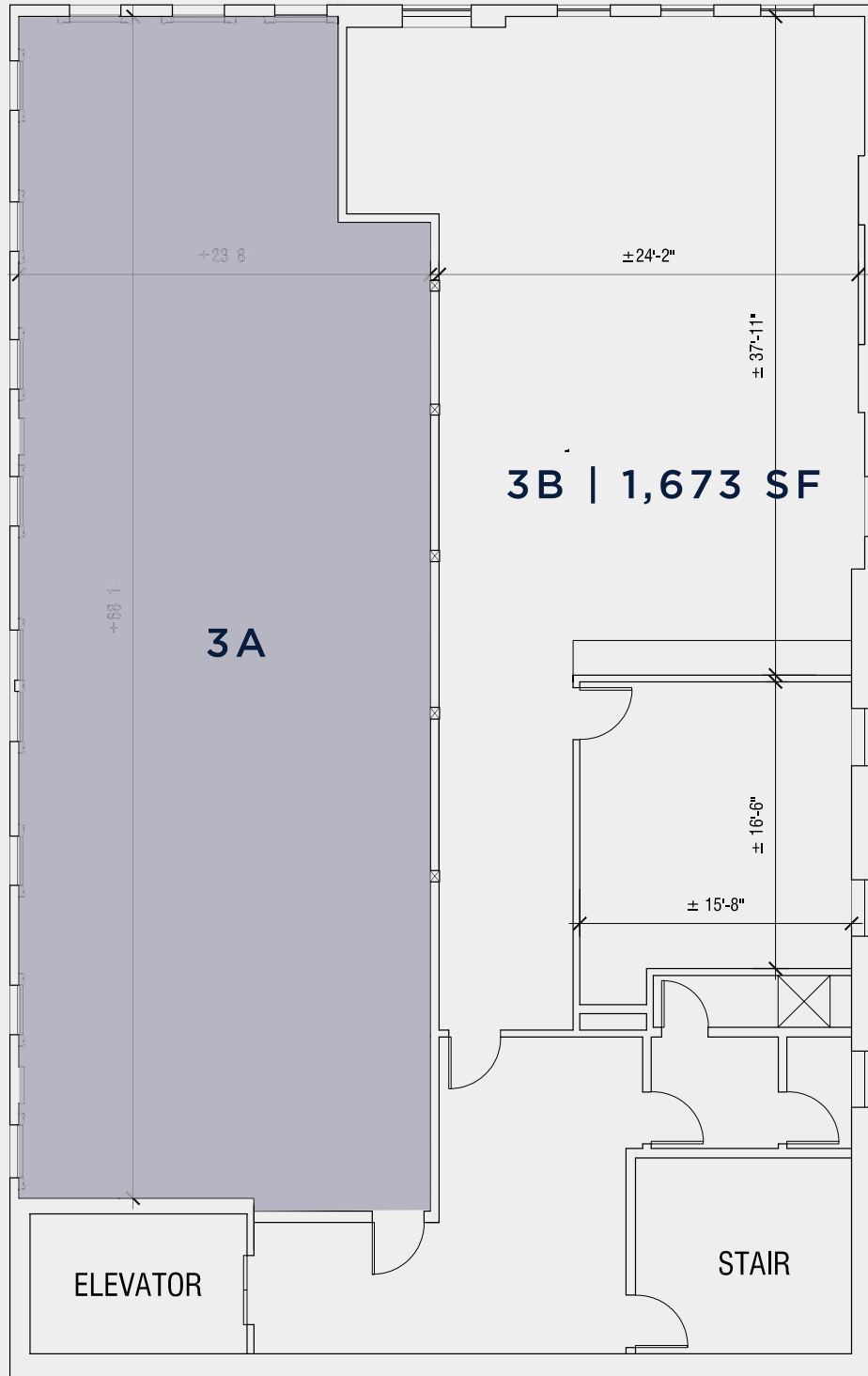
@pingreenorthwest.com

[PINGREENORTHWEST.COM](https://pingreenorthwest.com)



# CULLY BUILDING

CREATIVE / OFFICE SPACE



**TIM MCCARRON** Property Manager

(503) 939-9449 / [tmccarron@pingreenorthwest.com](mailto:tmccarron@pingreenorthwest.com)

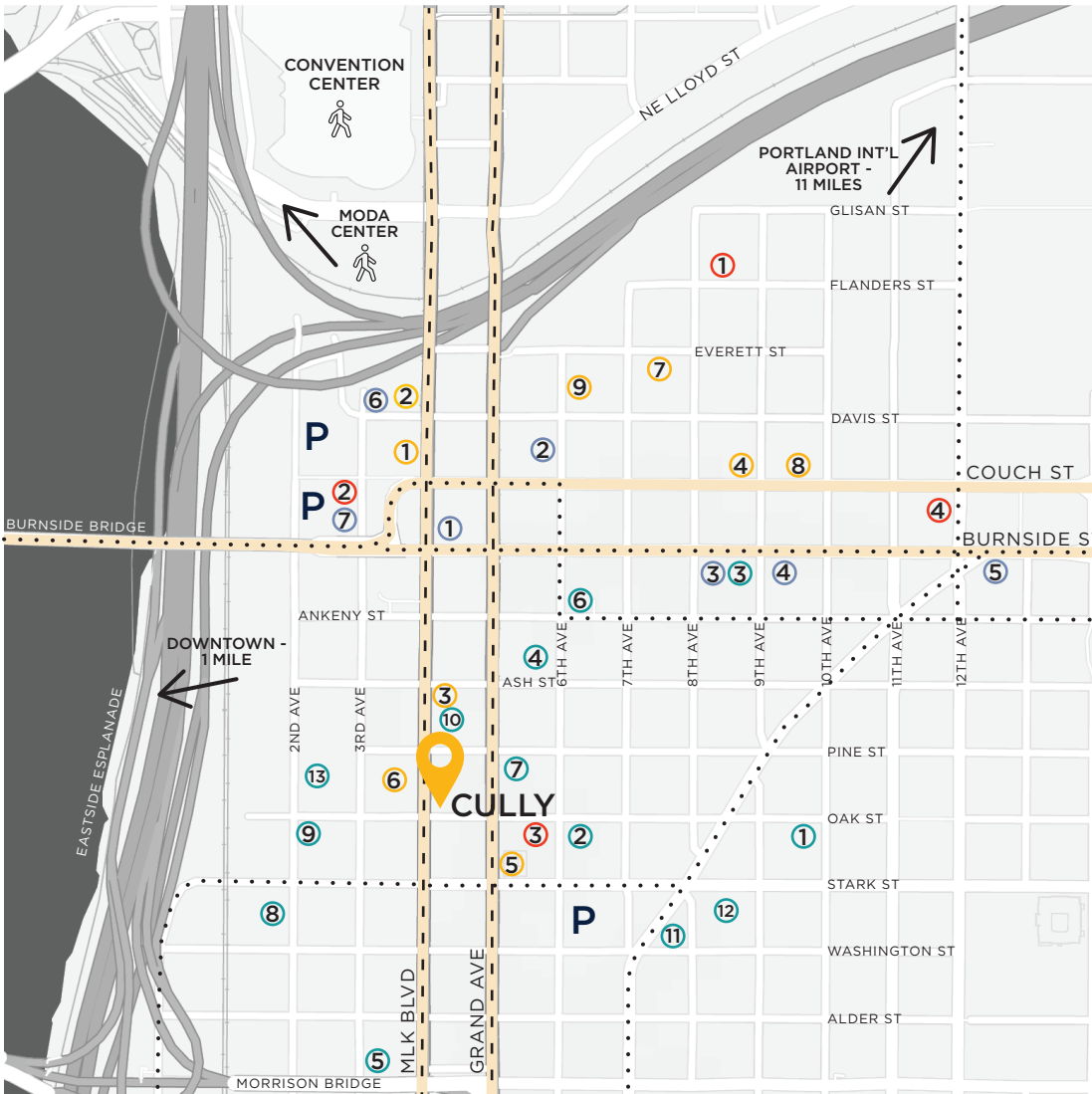
[PINGREENORTHWEST.COM](http://PINGREENORTHWEST.COM)

# NEIGHBORHOOD

**TIM MCCARRON** Property Manager

(503) 939-9449 / tmccarron@pingreenorthwest.com

[PINGREENORTHWEST.COM](http://PINGREENORTHWEST.COM)



## KEY

WALKING DISTANCE



PARKING



BUS ROUTE

STREET CAR

BIKE LANE



1. Base Camp Brewing
2. Cooper's Hall
3. Doug Fir Lounge
4. J&M Cafe
5. Le Bistro Montage
6. Marukin Ramen
7. Nicholas Lebanese
8. Olympia Provisions
9. Produce Row
10. Revelry
11. Rum Club
12. The Upper Crust
13. Wayfinder Brewing



1. 11:11
2. Cosube
3. Evo
4. Modo
5. Next Adventure
6. Office Depot
7. O'Gallerie
8. Seven Sisters
9. Woodcrafters



1. The Aura
2. Central Eastside Lofts
3. Jupiter Hotel
4. Jupiter Next
5. Linden Apartments
6. Slate
7. The Yard



1. Crossfit Portland
2. Knot Springs
3. Modo Yoga
4. Portland Rock Gym