



PINGREE NORTHWEST



FOR LEASE / 7,212 SF / \$19.50/SF GROSS

OFFICE SPACE
5520 SW Macadam Ave.
Portland OR

HARBOR SQUARE SW

HARBOR SQUARE SW BUILDING

OFFICE

5520 SW MACADAM AVE.
PORTLAND OR
7,212 SF | \$19.50/SF GROSS

Easy configuration allows for a variety of uses. Enjoy immediate access to the Willamette Greenway trail system in this vibrant, emerging business district close to restaurants, freeways, and downtown Portland.

Reserved parking and ample visitor parking is available.

- IMMEDIATE ACCESS TO WILLAMETTE GREENWAY
- MONTHLY PARKING AVAILABLE
- EASY CONFIGURATION FOR A VARIETY OF USES
- VIBRANT, EMERGING BUSINESS DISTRICT CLOSE TO DOWNTOWN PORTLAND
- 2 LARGE CONFERENCE ROOMS
- 4 MEDIUM CONFERENCE ROOMS
- 12 PRIVATES
- 2 KITCHENETTES
- RECEPTION/WAITING AREA
- NEWLY RENOVATED COMMON AREAS

TIM MCCARRON

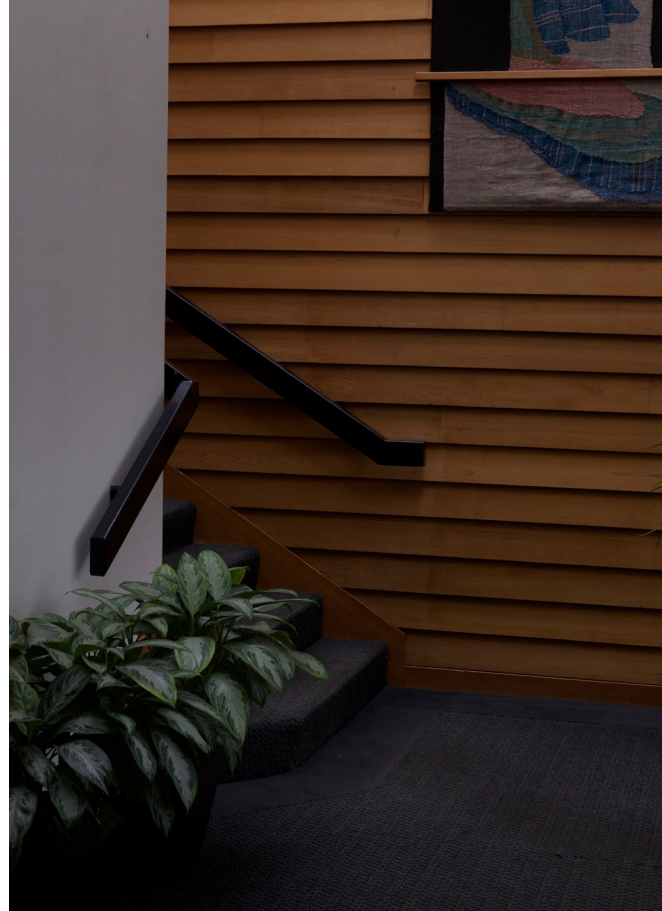
Property Manager

(503) 939-9449

tmccarron

@pingreenorthwest.com

[PINGREENORTHWEST.COM](https://pingreenorthwest.com)



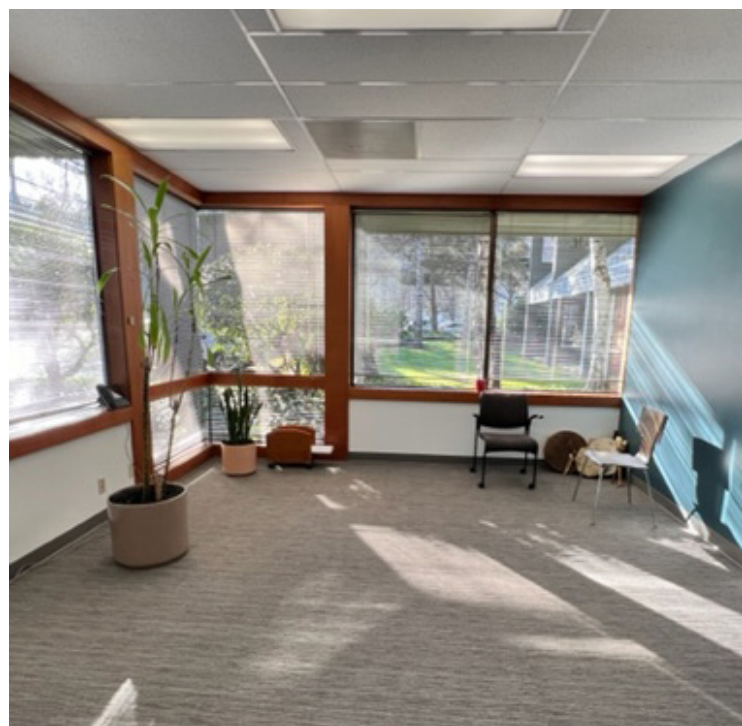
HARBOR SQUARE SW BUILDING

OFFICE

5520 SW MACADAM AVE.

PORTLAND OR

7,212 SF | \$19.50/SF GROSS



TIM MCCARRON

Property Manager

(503) 939-9449

tmccarron

@pingreenorthwest.com

PINGREENORTHWEST.COM

HARBOR SQUARE SW BUILDING

OFFICE



STE 190 | 7,212 SF

TIM MCCARRON

Property Manager

(503) 939-9449

tmccarron

@pingreenorthwest.com

PINGREENORTHWEST.COM