



PINGREE NORTHWEST



FOR LEASE / 4,014 - 8,983 SF / \$20/SF + NNN

CREATIVE OFFICE

911 NE Davis St Portland, OR

AXIOMATIC BUILDING

AXIOMATIC BUILDING

CREATIVE OFFICE

911 NE DAVIS ST PORTLAND, OR
4,014-8,983 SF | \$20/SF +NNN

The Axiomatic Building is a two story concrete creative space located conveniently close in Central Eastside, a couple blocks away from Burnside.

- AVAILABLE IMMEDIATELY
- FLEXIBLE TERMS
- INDEPENDENTLY ACCESSED
- PARKING
- MIX OF PRIVATE OFFICES AND CONFERENCE SPACES
- SHOWERS ONSITE
- KITCHENETTE
- OUTDOOR LAWN AREA
- GREAT LIGHT
- SUITABLE FOR A VARIETY OF USES
- EXCELLENT PUBLIC TRANSPORTATION



TIM MCCARRON

Property Manager

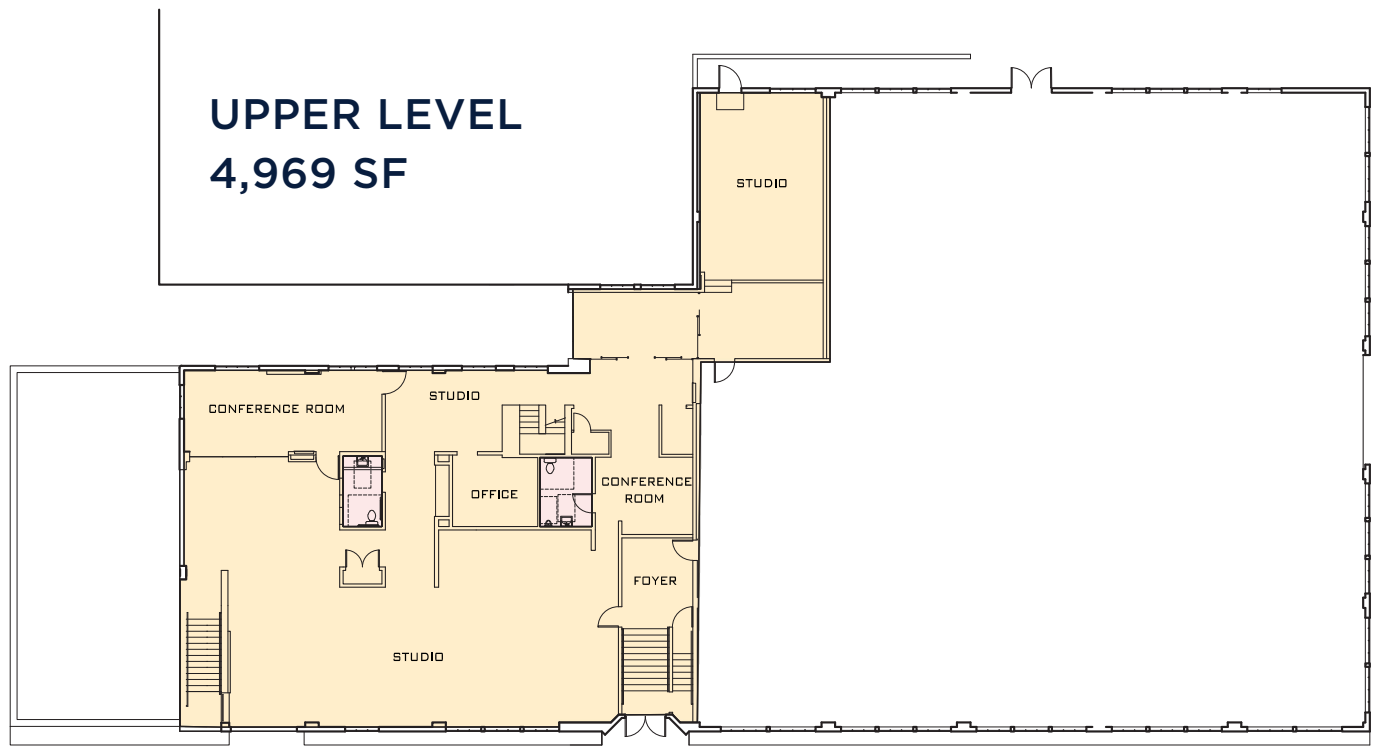
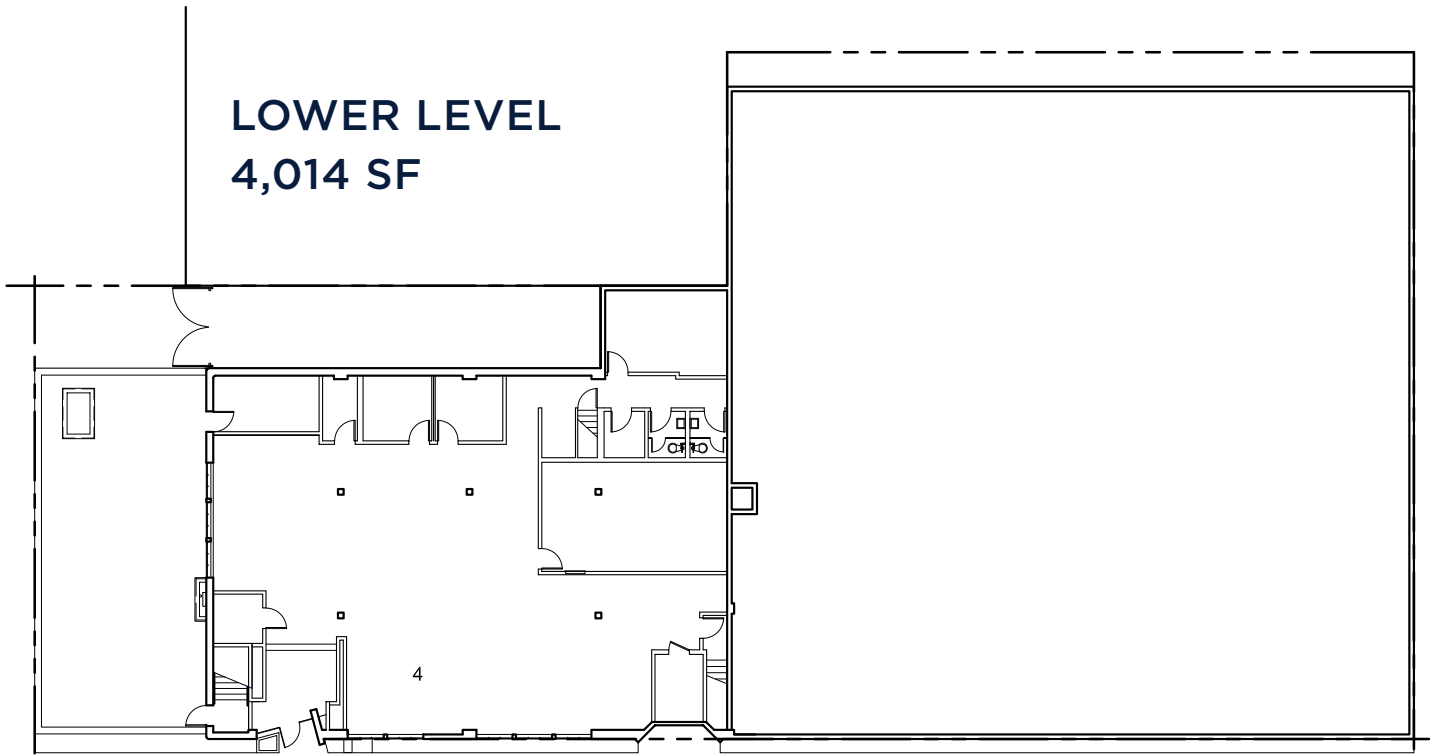
(503) 939-9449

tmccarron

@pingreenorthwest.com

PINGREENORTHWEST.COM

AXIOMATIC



TIM MCCARRON Property Manager

(503) 939-9449 / tmccarron@pingreenorthwest.com

PINGREENORTHWEST.COM

CENTRAL EASTSIDE NEIGHBORHOOD

TIM MCCARRON Property Manager

(503) 939-9449 / tmccarron@pingreenorthwest.com

PINGREENORTHWEST.COM



KEY

WALKING DISTANCE



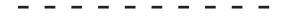
PARKING



BUS ROUTE



STREET CAR



BIKE LANE



1. Base Camp Brewing
2. Cooper's Hall
3. Cup and Bar
4. Doug Fir Lounge
5. F&B Cafe
6. Marukin Ramen
7. Olympia Provisions
8. Produce Row
9. Revelry
10. Rontoms
11. Rum Club
12. The Upper Crust
13. Wayfinder Brewing



1. 11:11
2. Cosube
3. Evo
4. Modo
5. Next Adventure
6. O'Gallerie
7. Seven Sisters
8. Woodcrafters



1. The Aura
2. Central Eastside Lofts
3. Jupiter Hotel
4. Jupiter Next
5. Linden Apartments
6. Slate
7. The Yard



1. Crossfit Portland
2. Knot Springs
3. Modo Yoga
4. Portland Rock Gym